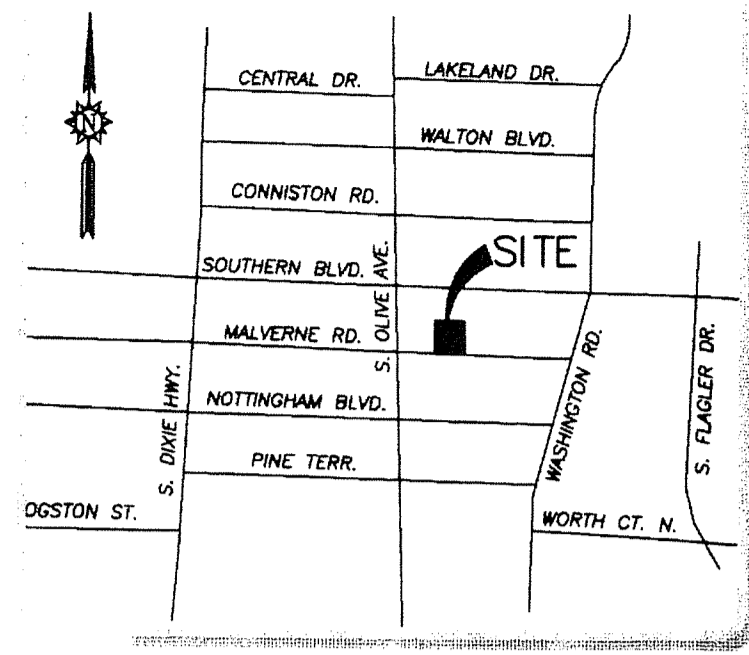


# "MALVERNE HOMES"

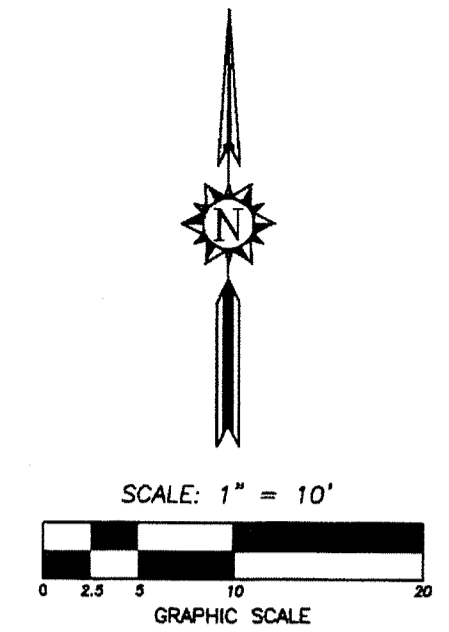
A RE-PLAT OF ALL OF LOTS 320, 321, 322 AND 323 OF THE REVISED PLAT OF ESTATES OF SOUTH PALM BEACH, ACCORDING TO THE PLAT THEREOF, RECORDED IN PLAT BOOK 7, PAGE 33, PALM BEACH COUNTY RECORDS BEING A PORTION OF THE NORTHWEST 1/4 OF SECTION 3, TOWNSHIP 44 SOUTH, RANGE 43 EAST CITY OF WEST PALM BEACH, PALM BEACH COUNTY, FLORIDA



LOCATION MAP

NOT TO SCALE

NGS HORIZONTAL CONTROL POINT  
"T43 44S R43E 3 4 33 34 ECC"  
FOUND CHISEL CROSS  
N: 852470.69  
E: 964774.33



112

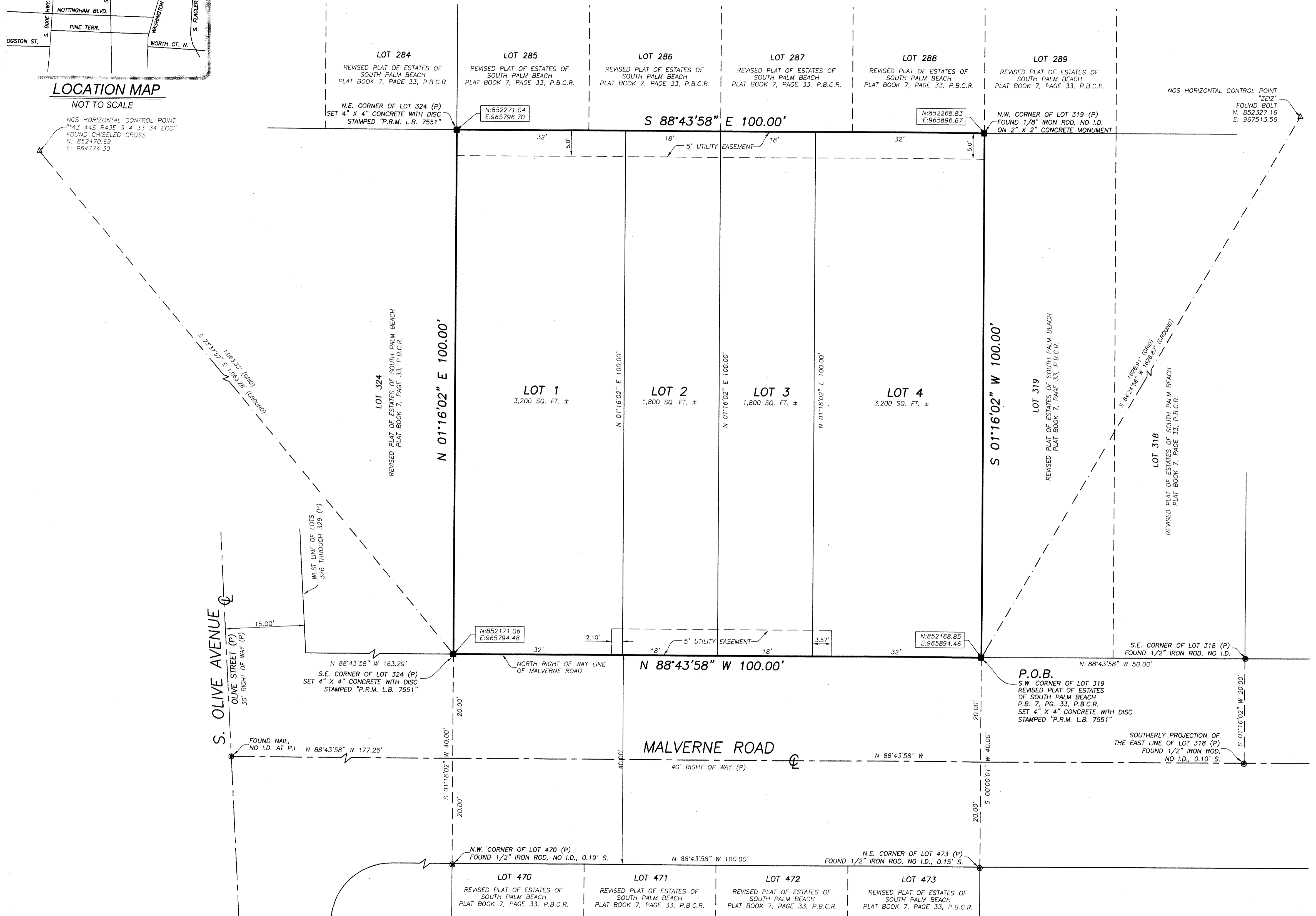
STATE OF FLORIDA  
COUNTY OF PALM BEACH

THIS PLAT WAS FILED FOR RECORD AT  
THIS \_\_\_\_\_ DAY OF \_\_\_\_\_ 2014  
AND DULY RECORDED IN PLAT BOOK \_\_\_\_\_  
PAGES \_\_\_\_\_

SHARON R. BOCK, CLERK AND  
COMPTROLLER - PALM BEACH COUNTY

By: \_\_\_\_\_

SHEET 2 OF 2



- LEGEND:
- F.P.L. .... FLORIDA POWER & LIGHT COMPANY
  - ⊕ ..... CENTERLINE
  - P.O.B. .... POINT OF BEGINNING
  - P.B.C.R. .... PALM BEACH COUNTY RECORDS
  - P.R.M. .... PERMANENT REFERENCE MONUMENT
  - NGS ..... NATIONAL GEODETIC SURVEY
  - N: ..... NORTHING
  - E: ..... EASTING
  - L.B. .... LICENSED BUSINESS
  - P.B. .... PLAT BOOK
  - PGS. .... PAGES
  - U.E. .... UTILITY EASEMENT
  - ID. .... IDENTIFICATION
  - (P) ..... DENOTES BEARING AND/OR DISTANCE BASED ON PLAT OF RECORD
  - |— ..... BREAK IN LINE SCALE

- NOTE:
1. THE COORDINATES SHOWN HEREON ARE BASED ON THE FLORIDA STATE PLANE COORDINATE SYSTEM, EAST ZONE (0901), NORTH AMERICAN DATUM (N.A.D.) OF 1983-90.
  2. THE BEARINGS SHOWN HEREON ARE BASED ON A BEARING OF N 88°43'58"W, ALONG THE CENTERLINE OF MALVERNE ROAD AND REFER TO THE FLORIDA STATE PLANE COORDINATES SYSTEM, EAST ZONE, 1983 (1990) ADJUSTMENT.
  3. NOTICE: THIS PLAT, AS RECORDED IN ITS GRAPHIC FORM, IS THE OFFICIAL DEPICTION OF THE SUBDIVIDED LANDS DESCRIBED HEREIN AND WILL IN NO CIRCUMSTANCES BE SUPPLANTED IN AUTHORITY BY ANY OTHER GRAPHIC OR DIGITAL FORM OF THE PLAT.
  4. THERE MAY BE ADDITIONAL RESTRICTIONS THAT ARE NOT RECORDED ON THIS PLAT THAT MAY BE FOUND IN THE PUBLIC RECORDS OF THIS COUNTY.
  5. THE SCALE FACTOR FOR NGS CONTROL POINT "T43 44S R34E 3 4 33 34 ECC" = 1.00005037. THE SCALE FACTOR FOR NGS CONTROL POINT "ZEIS" = 1.00005232. (GROUND DISTANCE = GRID DISTANCE / SCALE FACTOR).

TELEPHONE NO. 561-314-0769 FAX NO. 561-314-0770

**EXACTA**  
COMMERCIAL LAND SURVEYORS  
L.B. 7551

3460 FAIRLANE FARMS ROAD, SUITE 6, WELLINGTON, FL. 33414